

AI Powered Imagery Enhances Project Management

November 17, 2021

As public awareness of infrastructure spending increases, the construction industry is finding new ways to enhance jobsite productivity. Top contractors rely on innovative integrations to get the most out of their project management platforms.

Construction cameras are now an integral part of jobsite management and a key driver of digitalization in the industry. Using them to incorporate visual information into project management platforms like [Procore](#) and [Infotech](#) has proven to be a highly effective way to prevent loss, report progress, track equipment and materials, prevent cost overruns, and enforce safety.

“EarthCam has proven to be a dedicated, innovative partner, delivering essential real-time imagery directly to Procore to help us improve communication and increase productivity for project management,” said Bill Moultrie, Project Executive at Choate Construction Company. “EarthCam’s high-quality visual data expedites many processes and helps to keep us on schedule.”

EarthCam’s latest integration with Procore allows for image automations that make daily reports more informative, keep workers safe, and make project management more efficient. Using new AI object recognition technology, visual audits are automatically generated and sent to Procore, and a wide-range of live webcam imagery can be pushed to the platform, producing a real-time, single source of truth to drive productivity.

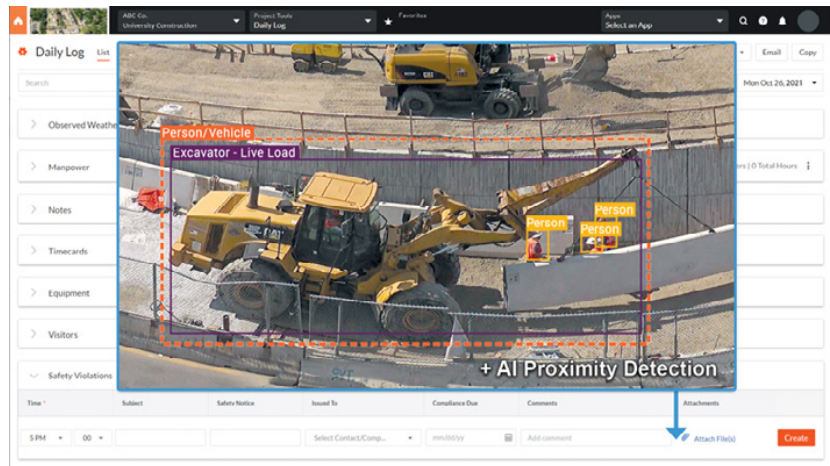
EarthCam’s integration with Infotech, a leader in infrastructure software solutions, creates an essential visual timeline from the project site, inserting that data directly into daily workflow and enhancing the audit trail.

Accurate construction documentation is essential for inspections and daily reporting. By using an EarthCam camera on a jobsite, Infotech users can view digital jobsite activity remotely in real-time to make informed decisions and have a visual historic record of progress. Image uploads can even include metadata such as weather, project title, and date/time stamp.

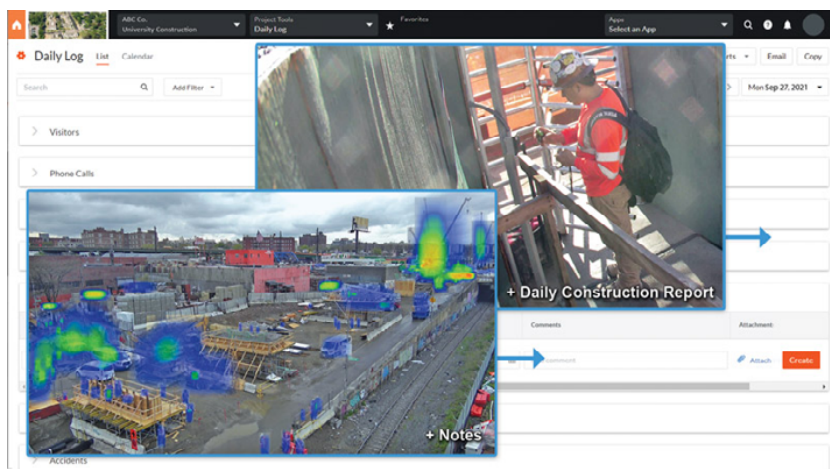
With pioneering new applications for AI-powered imagery, EarthCam is continually developing richer visual experiences for a more informative jobsite. EarthCam provides end-to-end services, including camera rentals, same-day delivery, and professional installation.

Reach out to see how EarthCam’s technology can help you get the most ROI from your project management platform:

<http://www.earthcam.net>



EarthCam’s new AI powered proximity detection for Procore’s daily log.



EarthCam’s new automations for Procore’s daily log: heatmap images, video time stamps.